



## History Recovery with REST Professional Version 15 Upgrade

During the upgrade process to REST Professional Version 15.0.05, the operator will be provided with an option to run a full or partial history recovery.

**REST History Recovery**

 A history recovery needs to be run as part of the upgrade to Version 15.0.05. This process may be time consuming, but is necessary to ensure accurate historical reporting within REST Professional.

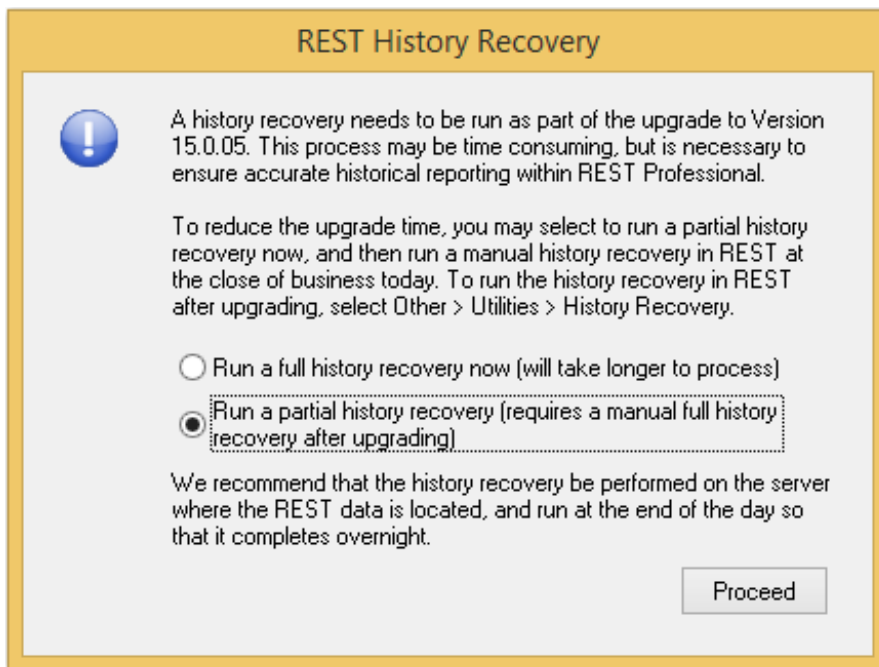
To reduce the upgrade time, you may select to run a partial history recovery now, and then run a manual history recovery in REST at the close of business today. To run the history recovery in REST after upgrading, select Other > Utilities > History Recovery.

Run a full history recovery now (will take longer to process)

Run a partial history recovery (requires a manual full history recovery after upgrading)

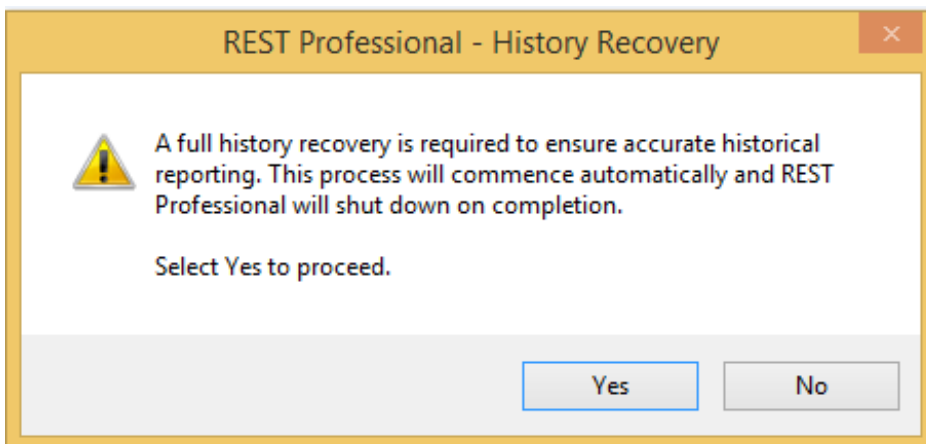
We recommend that the history recovery be performed on the server where the REST data is located, and run at the end of the day so that it completes overnight.

Selecting a partial history recovery will reduce the upgrade time, but in order to ensure accurate historical reporting in REST Professional, a full history recovery will be required as soon as possible after upgrading each REST database to V15.0.05.



After upgrade to v15.0.05, when a full history recovery has not been completed; a prompt message to perform this action will display to the last user logging out of REST Professional.

- When selected, the history recovery will begin after the backup selection has been made and will close REST Professional upon completion
- This prompt will continue to display to the last user logging out of REST Professional until a full History Recovery has been performed.



## History Recovery Instructions

To run the history recovery in REST after upgrading, select **Other > Utilities > History Recovery**. Since a full history can be time consuming, it is recommended this is performed on the server where the REST data is located. To avoid disruptions to your workplace, it may be best to run a full history recovery at the end of the business day to complete overnight.